

**BRISTOL**  
COMMUNITY COLLEGE



**ANNUAL  
REPORT  
2025**



## Credits

A collaborative publication of the  
Bristol Community College Foundation  
and Marketing & Communications

### Contributing Editors

Joyce Faria Brennan  
Andrea Fortier  
Jenn Harris  
Judi Urquhart

### Publication Design & Interviews

Elevate Marketing & Communications

### Photography

Edward Caruso  
Shelley Manolakis  
Adam Richins Photography  
Kevin Spirlet

### Special Thanks

Dawn Banville  
Shelley Manolakis  
Kevin Spirlet  
Tom Vieira

Bristol Community College Foundation  
777 Elsbree Street, D109  
Fall River, MA 02720

Bristol Community College  
11 Field Road  
Attleboro, MA 02703

777 Elsbree Street  
Fall River, MA 02720

800 Purchase Street  
New Bedford, MA 02740

2 Hamilton Street  
Taunton, MA 02780

198 Herman Melville Boulevard  
New Bedford, MA 02740

### Mailing List, Opt-Out

Please contact the  
Bristol Community College Foundation  
at 774.357.2007

# A Message from President Sedgwick L. Harris, Ed.D.

It is an honor to serve as the fifth President of Bristol Community College during a time of both reflection and forward momentum. Bristol's story is shaped over time by many hands, shared purposes, and a commitment to creating opportunities. It is this commitment that defines Bristol—a community where all are welcome, and where we work together to build a brighter, more just future.

As a proud community college graduate and first-generation college student, I have experienced firsthand how access to higher education can change the direction of a life. The expansion of free community college has opened doors for many students. Yet student success is rarely defined by access alone. Many students balance coursework with work, family responsibilities, housing and transportation challenges, and short-term financial pressures. When academic guidance and student support come together, students remain enrolled and persist. By ensuring students have the support they need to succeed, Bristol is also preparing a skilled and adaptable workforce capable of meeting the evolving needs of the region and driving economic growth.

This understanding shapes Bristol's 2025–2030 Strategic Plan, which affirms the college's responsibility to respond to regional needs and to play a leading role in workforce training. The region Bristol serves is evolving—demographically, economically, and technologically. The college is deepening partnerships across education, industry, and community sectors. These collaborations add strength and continuity, reinforcing Bristol's role as an economic driver for Southeastern Massachusetts and beyond.

To remain a higher education leader, Bristol must continue to expand upon our strong academic foundation while developing innovative, responsive programming aligned with workforce and community needs. At the same time, we are strengthening partnerships with K–12 schools, vocational-technical institutions, employers, and regional leaders to ensure our programs reflect real opportunities and lead directly to meaningful careers.



What defines Bristol is the way learning, support, and opportunity are intentionally woven together. As President, I recognize that any progress we make is only possible through the shared efforts of our faculty, staff, students, and community partners. I am profoundly grateful for the Bristol Community College Foundation, whose tireless efforts ensure students have the resources, scholarships, and opportunities they need to thrive. Through purpose and steady commitment, these elements create pathways that honor students' aspirations, strengthen the communities they call home, and deepen our connections with alumni who continue to support and inspire the next generation of Bristol graduates.

Guided by this shared mission, Bristol Community College remains dedicated to educating minds, enriching lives, and strengthening our communities.

Respectfully,

A handwritten signature in blue ink that reads "Sedgwick L. Harris". The signature is fluid and cursive.

Sedgwick L. Harris, Ed.D.

# Message from the Bristol Community College Foundation

Dear Friends and Supporters,

This year, our alumni and supporters helped Bristol students find support, guidance, and pride as they achieved their educational goals. We reached big milestones together. This report's design evokes a quilt, each story forming a square stitched with shared purpose, opportunity, and care.

In 2025, Bristol celebrated its 60th anniversary and welcomed President Sedgwick L. Harris, Ed.D., who led the development of a five-year plan to invest in students, strengthen connections, and drive regional economic vitality.

Thanks to your generosity, our impact was transformative, with over \$1 million raised through the Bristol Community College Foundation. This supported academic programs, student success initiatives, and faculty innovation. We are especially proud of the scholarships made possible this year—269 scholarships totaling \$394,000. You'll read about one of the student scholarship recipients, Sabrina Russell, in this annual report. We also supported a variety of college programs, including the Career Ready Clothing Closet, professional development for student veterans, and funding for a future public art installation commemorating the 1.5 million children lost in the Holocaust.

Recognizing that academic success depends on stability beyond the classroom, our CARE Fund provided over \$125,000 in emergency aid to students in crisis, helping them stay on track when unexpected hardships threatened their ability to remain in school.

We welcomed alumni and supporters raising funds and spirits through our Gala, Bristol Awards, and the Birdies for Bayhawks Benefit Golf Tournament. New Bedford native and former White House photographer Pete Souza, and wildlife conservationist and TV personality Jeff Corwin made the first two years of our Wolfson Speaker Series a standout addition to our calendar. All of these gatherings were moments of connection, learning, and celebration, supporting Bristol students together.

Deepening alumni and student connections remained a cornerstone. Students engaged with alumni leaders through mentorship and our first Lunch with Leaders events. They gained insight, encouragement, and



real-world perspective from those who have walked similar paths. These relationships, built on shared experience and generosity, embody the very best of Bristol.

To every donor, volunteer, leader, partner, and friend: Thank you! Serving this multigenerational community, from our first graduates to recent alumni, including those who are now faculty and staff, is an honor. Each generation adds to the quilt, strengthening and paying forward knowledge, mentorship, and opportunity.

We invite you to stay engaged in 2026. Participate in events and lifelong learning. Connect with students as mentors or advocates. By joining together, we honor the past and ensure today's students have the support they need to thrive.

With appreciation,

Judi Urquhart

Chief Advancement Officer

Frank B. Sousa III

President, Foundation Board of Directors

# FAST FACTS

8,010

**STUDENTS ENROLLED** in Fall 2025 at Bristol, which translated to a full-time equivalent (FTE)\* of 4,728.7.

#4

**RANKING** by enrollment among the 15 Massachusetts community colleges for Fall 2024; Bristol consistently ranks as one of the largest in the Commonwealth's system.

\$394K

**TOTAL SCHOLARSHIP FUNDS** from the Foundation

269

**SCHOLARSHIPS AWARDED** from the Foundation

117

**DEGREE & CERTIFICATE PROGRAMS**  
Programs cover a broad range of academic and career-focused subjects, from art and design to veterinary health care.

\$160.6M

**GROSS IMPACT IN BRISTOL COUNTY**  
Every \$1 spent locally by Bristol Community College and its students generates an additional \$0.64 in the local economy, for a total economic impact of \$1.64.

## FREE COLLEGE

### A BOLD INVESTMENT IN MASSACHUSETTS' FUTURE

The Commonwealth of Massachusetts continued to offer free community college through the MassEducate and MassReconnect programs. All eligible Massachusetts residents who have not yet earned a bachelor's degree are able to earn a degree, tuition free. For more details, visit: [BristolCC.edu/FreeCollege](https://BristolCC.edu/FreeCollege)

5,432

Students received **FREE COMMUNITY COLLEGE** funding in FY25

\$12.7M

**FREE COMMUNITY COLLEGE** funding awarded to Bristol students in FY25

\*Enrollment is often measured by full-time equivalent (FTE). The FTE calculation is based on the sum of credits carried by all students divided by 15.

The John J. Sbrega Health and Science Building is a Zero Net Energy facility that houses Bristol Community College's nursing, biology, chemistry, clinical laboratory science, dental hygiene, and medical assisting programs, with specialized labs and clinical training spaces.



# EXPANDING ACCESS TO NURSING EDUCATION

## Bristol Launches Evening and Weekend Nursing Program

Meeting the growing demand for nurses requires not only strong academic programs, but also flexible pathways that reflect the realities of today's students. Bristol Community College's Evening and Weekend Nursing Program represents a bold step forward—designed specifically for working adults, parents, and career-changers who are unable to pursue traditional daytime nursing education.

Launched as a pilot in January 2025, the program was developed to remove barriers that often prevent capable students from entering the nursing profession. The inaugural cohort began with seven students, all balancing employment, family responsibilities, and coursework. While the challenges were real, four students successfully completed the spring and summer terms and continued into the next semester—demonstrating both resilience and the promise of this innovative model.

Lessons learned from the pilot year directly informed refinements now underway. Beginning in Spring 2026, the program is transitioning fully to a hybrid format, with didactic coursework delivered online and all labs and clinical experiences offered exclusively during evenings and weekends. This structure directly reflects student feedback and aligns with accreditation standards established by the Massachusetts Board of Registration in Nursing. Importantly, the revised model also ensures students remain eligible for financial aid by maintaining appropriate credit loads.

The Evening and Weekend Nursing Program mirrors the college's long-standing hybrid nursing curriculum—unchanged in its academic rigor since 2012—while expanding access through guaranteed evening and weekend lab and clinical placements.

Growth is already on the horizon. The Spring 2026 cohort welcomed 16 students, with plans to expand to a full cohort of 24 students by Spring 2027. To support this growth, the college is actively hiring additional clinical faculty and program support staff, strengthening the foundation for long-term sustainability and student success.

This progress is made possible thanks to the generosity and vision of our donors. Kathy and Brian MacLean and the Charlton Charity Fund played an instrumental role in bringing the Evening and Weekend Nursing Program to fruition. Their support enabled Bristol to pilot the program, learn from real-world student experiences, and refine the model to better serve future cohorts. Because of their investment, more students will be able to pursue nursing careers—strengthening the regional health care workforce and improving patient care across our communities.

# New AI Innovation Lab Will Expand Technology Resources for the Bristol Community

As an educational leader in preparing students to meet the workforce demands of a shifting digital economy, Bristol Community College is proud to be recognized as a National Security Agency (NSA)-designated Center of Academic Excellence (CAE) in Cybersecurity. To expand its capacity as a regional hub for AI and emerging technology education, Bristol is constructing a state-of-the-art Artificial Intelligence Innovation Laboratory (AI Lab) on its Fall River Campus that will advance tech career pathways for students and support workforce development across the South Coast.

Steven Frechette, D. Sc., lead faculty for Computer Information Services and Cybersecurity, said Bristol's goal for the new space is to create a "community-driven center" that fosters dynamic AI learning through both teaching and hands-on exploration. Bristol's AI Lab will offer students and collaborating community partners equitable access to emerging technologies so that they can build the AI skills needed for career success.

"We want this lab to be supported by the community, for the community," said Dr. Frechette. "Artificial intelligence is going to touch everybody—our students, our workforce, our business community—and this space is about giving people a place to explore, experiment, and get excited about what's possible."

Bristol's AI Lab will feature two integrated zones designed to facilitate academic instruction, community training, and public demonstrations. Its AI Learning and Collaboration Zone will be equipped with 24 AI workstations for machine learning, data analytics, and cybersecurity simulations, as well as state-of-the-



art audiovisual systems to support hybrid learning and interactive demonstrations. The Virtual and Applied Technology Zone will house a Virtual Reality (VR) suite offering immersive learning across multiple disciplines—from nursing and anatomy to HVAC and plumbing—and dedicated spaces for cybersecurity and networking simulations. A frosted glass partition will allow the lab to function as a single open event space or two distinct instructional areas.

Located in the Fall River Campus's Engineering Building, the new lab will strengthen experiential learning across the college's diverse academic disciplines by allowing students to engage with real-time data, AI modeling, and automation tools used in industry. The AI Lab will also fill identified gaps in the region's workforce development by providing critically needed AI training to collaborating employers. Through K-12 school partnerships, lab programming will also introduce prospective students to academic pathways for pursuing technology careers, and infusing AI-literate talent into the local workforce.

Once open, Bristol's AI Lab will be a magnetic educational hub, offering learners the technology resources that will prepare them for success in a digital-first workforce.



**Dr. Steven Frechette shows his students Bristol's new AI Lab under construction on the Fall River Campus. Once the space is completed, AI workstations will be equipped with computers from the current lab, above.**

# BRISTOL DELIVERS QUALITY CARE TO THE COMMUNITY

## Sabrina Russell, LPN '18 Pursues New Career Direction with Bristol's MassReconnect Program

Having spent the past five years working full-time as a licensed practical nurse (LPN) at a local rehabilitation center, Sabrina Russell knew that a nursing degree would expand her career opportunities. Worried about managing college costs, she put off moving forward until the availability of free community college through the MassReconnect program offered at Bristol Community College changed her mind. Launched statewide in 2023, MassReconnect allows Massachusetts residents 25 and older to attend community college tuition-free if they have not yet earned an associate or bachelor's degree. The program has since expanded through MassEducate, extending eligibility to Massachusetts students 18 years or older who meet the program's criteria.

"I chose Bristol because it's affordable," said Russell. "That's the main reason why I started back up again."

Russell first attended Bristol right after high school, enrolling in the college's Certified Nursing Assistant (CNA) program in the Fall of 2018. Toward the end of the program, she was assigned to a local rehabilitation center for her clinical training—a placement that had a major impact on her career track. "I did my clinicals at this rehab center and felt like it was a good fit," said Russell. "They let me apply right then and there, and they hired me. I've been there ever since." After receiving her CNA certification, Russell completed a year-long Practical Nurse Program at Bristol-Plymouth Regional Technical School and became an LPN in 2020. With support from MassReconnect



and the Bristol Community College Foundation's tuition aid resources such as the Virginia and Harold Lash Scholarship, Russell re-enrolled at the college's Fall River Campus last spring to pursue an associate degree in nursing.

Bristol's mix of in-person and online course formats has allowed Russell the flexibility to maintain her full-time nursing schedule, while its student support services have eased her adjustment to college as an adult learner. Bristol's academic advising services have helped Russell stay on track with course registration and deadlines, and she relies on its writing center to assist with proofreading assignments. A Phi Theta Kappa Honor Society member, she is looking forward to earning her license as a registered nurse upon graduation in May 2027.

Pursuing her Bristol nursing degree is propelling Russell's career in new directions, and she encourages others to see where Bristol—and Free Community College—can take them as well. "I would definitely say don't wait," said Russell. "Not many things in life are free. Schooling is very expensive, so if you can get it done with no loans, that's amazing."

For more details, visit [BristolCC.edu/FreeCollege](https://BristolCC.edu/FreeCollege).

## Shellise Jackson, BSN, RN '16 '18 Keeps Reaching Higher to Build Her Dream Nursing Career

Shellise Jackson was juggling a lot in her thirties. A single parent, she was raising five children and working full-time in a medical office to provide for her family. Still, she knew that getting a college degree could lead to her dream career and a more secure future for all of them. “I just felt like it was time for me to be able to pursue my goals, what I really wanted in my heart of hearts—and that was nursing,” said Jackson.

Bristol Community College proved to be the perfect choice for Jackson—close to home and work, with hybrid course offerings that enabled her to complete her academic program without reducing her work schedule. “The flexibility of online classes, as well as hybrid classes, really was the game changer for me to be able to fit everything into my lifestyle,” said Jackson. While at Bristol, Jackson completed an associate degree in health and life sciences in 2016, followed by her associate degree in nursing in 2018. Whenever she faced challenging coursework or test anxiety, Jackson said Bristol’s professors and student support services helped ensure that she achieved her academic goals.

“This is not just signing up for college,” said Jackson of her Bristol experience. “This is signing up to succeed—and the college is doing everything they can to help every student get to that next level, no matter what.” Jackson excelled at Bristol, becoming a Phi Theta Kappa Honor Society member and forming a parenting club to offer support for fellow adult learners balancing school and family life. For her contributions to the college community, Jackson was recognized with a Bristol Alumni Service Award in 2023.

After finishing her Bristol studies, Jackson transferred to University of Massachusetts Dartmouth (UMassD), earning her bachelor’s degree in nursing before being accepted into their five-year Doctor of Nursing Practice program. She has worked as an RN case manager at Bristol Hospice for the past six years and plans to advance her career as a nurse practitioner upon graduating from UMassD next spring.

For prospective students considering Bristol, Jackson’s advice mirrors her personal journey. “Don’t be afraid,” she said. “If this is what you want, just do it. Looking back at Bristol, it will always have my heart because it was able to help me provide a different life for me and for my children.”

**“This is not just signing up for college. This is signing up to succeed—and the college is doing everything they can to help every student get to that next level, no matter what.”**



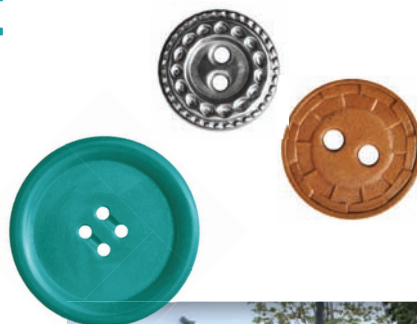
# Bristol's Button Project Honors Young Lives Lost to the Holocaust

One of the most painful statistics of the Holocaust is the staggering number of children who were killed in the genocide. The atrocities committed by the Nazi regime during World War II claimed the lives of 1.5 million children, and the impact of that much loss can be hard to grasp.

To honor these young lives, Bristol's Holocaust and Genocide Center launched a community-wide button collection project in 2017 with the goal of amassing 1.5 million buttons—each small token symbolizing one child lost to the Holocaust. With support from schools, businesses and international contributors, Bristol's button count surpassed its goal in 2020.

Throughout the project, Bristol sought to remember these children and give voice to their stories through button-themed art. As buttons were being collected, Bristol art students designed button mosaic portraits of Holocaust victim Anne Frank and survivor Stephen Ross, now housed at Bristol's Grimshaw-Gudewicz Gallery.

Following the COVID hiatus, Bristol convened a Button Project Committee to oversee a public art installation that would serve as a permanent display for the button collection. After issuing a "Call for Proposals for a Public Work of Art," the Committee selected Boston artist Zach Horn to create the public artwork. In March 2025, the Committee announced the finalist's selection at the opening of an exhibit in the college's Grimshaw-Gudewicz Art Gallery entitled "Bearing Witness: A Sea of Buttons in Memory of the Holocaust's Youngest Victims." The temporary art display featured all 1.5 million buttons stretched out across the gallery floor, a striking visual of so many tiny lives lost.



This artist rendering shows how the final installation will look.

Horn's installation will feature twelve double-sided, laminated glass panels supported by stainless steel frames. The buttons will fill the gaps between each set of clear panels, creating dotted vertical screens that will edge a courtyard on Bristol's Fall River Campus. The peaceful space will allow visitors to see every button up close and invite quiet reflection upon the enormity of human loss that the collection represents.

"The intention is that, with shafts of sunlight passing through the buttons, or snowflakes falling gently in winter, the buttons will be beautiful," said Horn. "I want this work to have an incongruity between the upfront grace and the underlying horror."

Installation of the art panels is slated for Summer 2026. For more information about the project, please visit: [BristolCC.edu/Artgallery/Thebuttonproject](https://BristolCC.edu/Artgallery/Thebuttonproject).



Bristol's March 2025 exhibition "Bearing Witness: A Sea of Buttons in Memory of the Holocaust's Youngest Victims" displayed the more than 1.5 million buttons collected for use in the Button Project outdoor art installation slated for Summer 2026.

# A HEARTFELT THANK YOU TO OUR VALUED SPONSORS

We are grateful to the businesses who partnered with us this year to drive educational opportunities, workforce development, and community vibrancy.

**Thank you for standing with our students and demonstrating that you believe in their potential.**

BayCoast Bank

BayCoast Insurance

BankFive

Bluestone Bank

Bristol County Savings Bank

Bristol County Savings

Charitable Foundation, Inc.

Civitects PC

Fall River Municipal Credit Union

IWNL Energy

Law Offices of Jane E. Sullivan, P.C.

Law Offices of Julianne Feliz

Mechanics Cooperative Bank

Plimoth Investment Advisors

Rockland Trust

Senator Michael Rodrigues

Somerset Federal Credit Union

SouthCoast Wind

St. Anne's Credit Union

Webster Bank, N.A.

Westport Federal Credit Union

**Bristol Community College Foundation sponsors align themselves with our 40,000 alumni and 8,000 students with benefits, including:**

- ▶ Special access to tickets and speaking opportunities
- ▶ Prominent recognition in:
  - > Monthly newsletters distributed to 15,000 recipients
  - > Printed annual report, invitations and programs
  - > Social media campaigns

**JOIN US AS A SPONSOR THIS YEAR FOR A BIG IMPACT,  
REAL CONNECTIONS AND MEANINGFUL EXPERIENCES.**

Bristol Community College is an important catalyst for economic development throughout the region. Through our strategic plan, the college is committed to strengthening partnerships, increasing alumni and student connection and relationships, and expanding initiatives that drive workforce readiness, innovation and local investment.

In 2026, we're inviting our corporate community to join us for an invigorated series of events and activities to raise funds and opportunity for a new generation of Bristol students. Sponsors promote their businesses while fueling our students' success.

**Questions?** Contact Jenn Harris, Director of Advancement and Strategic Giving  
[Jenn.Harris@BristolCC.edu](mailto:Jenn.Harris@BristolCC.edu); 774.357.2365

# GIVING

Your Support.  
Real Impact.  
Right Now.

Give in the way that works best for you.

## Bristol Annual Fund

### MAKE AN IMMEDIATE IMPACT

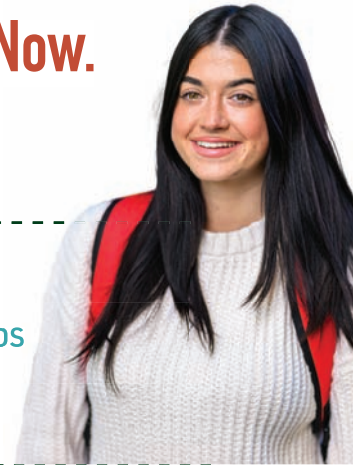
This past year, the Foundation provided more than **\$1 million** in funding to the college, and unrestricted gifts are especially valuable in meeting today's greatest needs, fueling high-impact academic programming, student success initiatives, and faculty innovation. Highlights include:

- ▶ A **Career Ready Clothing Closet**, providing students in need with professional clothing to support their transition into the workplace
- ▶ **National Student Veterans of America convention** professional development participation support for our student veterans
- ▶ **College video captioning** to ensure accessibility for all students
- ▶ A **public art installation** commemorating the 1.5 million children who perished during the Holocaust

## CARE Fund

### MEET STUDENTS' BASIC NEEDS

- ▶ **\$125,000** provided for **353 students** to cover basic needs in 2025



## Endowed Scholarships

### ESTABLISH OR SUPPORT AN EXISTING NEED OR MERIT-BASED SCHOLARSHIP

- ▶ **269 scholarships** awarded totaling **\$394,000** in 2025
- ▶ See the full list of 180 existing scholarships at [BristolCC.edu/Scholarships](https://BristolCC.edu/Scholarships)
- ▶ Last year, donors unlocked **\$100,000 in matching funds** through the Board of Higher Education Endowment Incentive Program. For every \$2 contributed to Bristol's endowment, the program funds a \$1 match through 2026. Bristol has received **\$986K in matched funds over the past five years.**

# WAYS TO GIVE

**ONLINE:** Make a ONE-TIME GIFT or MONTHLY GIFT online to sustain students today and in the future. Visit [BristolCC.edu/Giving](https://BristolCC.edu/Giving) or scan the QR code to give online now.



**CHECK:** Make checks payable to **Bristol Community College Foundation.**

**CORPORATE MATCH:** Increase your donation by using your employer's matching gift program.

**DONOR ADVISED FUND:** Recommend a grant from your DAF to fuel immediate, local impact. Federal Tax ID: 04-2707491

### WIRE TRANSFER OR ACH:

Bank Name: BayCoast Bank,  
PO Box 1311, Fall River, MA 02722  
ABA (Routing) Number: 21137223-9  
Account Name: Bristol Community College Foundation  
Swift Number: BAYOUS32  
Account Number: 594583084

Please notify us at [BCCFoundation@BristolCC.edu](mailto:BCCFoundation@BristolCC.edu) to let us know where to direct your gift.

### STOCKS AND PLANNED GIFTS:

Visit [Legacy.BristolCC.edu](https://Legacy.BristolCC.edu) or scan the QR code to explore your options.



**Mailing Address:** Bristol Community College Foundation | 777 Elsbree Street, D109 | Fall River, MA 02720

# DONOR HONOR ROLL – THANK YOU!

During this past fiscal year, 735 donors made meaningful gifts of every size honoring Bristol’s history, preparing for future sustainability, and ensuring that today’s students have the support they need to thrive. Together, through your collective generosity, the Foundation raised over \$1 million, supporting academic programs, student success initiatives, and faculty innovation. On behalf of our Bristol faculty, staff, and students, we thank you.

*Gifts given during fiscal year 2025 (July 1, 2024 – June 30, 2025)*

## **Bristol President’s Circle (\$50,000 +)**

Charlton Charity Fund U/A, Bank of America, N.A., Co-Trustee  
Koppelman Family Foundation  
Mass Cultural Council  
Massachusetts Board of Higher Education  
Richard S. Anderson Revocable Trust  
The Pamela J. Duarte Trust  
The Rodgers Family Foundation

## **Bristol Visionary Circle (\$10,000 +)**

Anonymous  
BayCoast Bank  
Scott A. Carlson  
CD & R Foundation  
Consulate of Portugal  
Dr. James D. Crosson\*  
Delta Dental of Massachusetts  
City of Fall River - American Rescue Plan Act Fund

Max F. and Edith C. Gold Charitable Foundation  
Janice Mercadante  
Helaine M. Schupack  
Southcoast Community Foundation  
The Boston Foundation, Inc.  
The Charles & Agnes Kazarian Foundation  
The Steven & Donna Gouveia Giving Fund  
Women’s Fund SouthCoast Inc.

## **Bristol Benefactor (\$2,500 +)**

Andersen Windows and Doors Volunteer Team  
BankFive  
Blount Fine Foods  
Bristol Wealth Group  
Lillian B. Carlson  
Dr. Laura Douglas\* and Gregg S. Johnson  
Fall River Women’s Union  
President Emerita Eileen Farley\*

Grimshaw-Gudewicz Charitable Foundation  
James Charitable Gift Fund  
Jewish Federation of Greater New Bedford  
Jewish Omni Services, Inc.  
Joanne Marshall ’71 and Joseph A. Marshall ’78  
J. Marshall Associates  
Massachusetts VFW Foundation Inc.  
My Brother’s Keeper  
Estate of Janice McCarthy  
Gilbert I. Mendelson  
Mark E. Mulready  
NAMI of Bristol County Massachusetts Inc.  
Rockland Trust  
Rhode Island Foundation  
Linda J. Schupack and David H. Good Charitable Fund  
Frank B. Sousa III  
Helene J. Sousa  
St. Anne’s Credit Union

Robert ’68 and Kathleen Wood

## **Bristol Leader (\$1,000 +)**

Karen Arsenault  
Barry Family Charitable Fund  
Bluestone Bank  
Bristol County Savings Charitable Foundation, Inc.  
Nicholas and Meg Christ  
Pamela A. Colaneri ’94\*  
Larry and Lois Curry  
Mrs. Donna S. Dunn  
Dale Ferris  
Kevin J.\* and Kathleen Torpey Garganta, RDH ’73\*  
Lorraine R. Garvin-Hollansyde ’19  
Brian and Mary Hodess  
Mr. and Mrs. Chester A. Hulton, Jr.  
Annie\* and Richard Ibara  
IWNL Energy  
Renee Maalouf  
Brian and Kathleen MacLean  
Massachusetts Foundation for the Humanities

Mechanics Cooperative Bank  
Joan M. Medeiros  
Renee Medley  
Russ\* and Beth Milham  
Holly and Tom Murray  
Lynne M. Massoud Nasiff and Peter J. Nasiff Scholarship Foundation  
Lyndi Oliveira  
Revvity Signals Software  
Dr. John J. Sbrega\* and Mrs. Jo-Anne M. Sbrega  
Peter Silva ’73 and Abra Degbor  
Greg\* and Kristen Sethares  
Taunton Literacy Council  
The Stobart Foundation  
Luke and Debra Travis  
Tremblay’s Bus Co, LLC  
United Way of Greater Fall River, Inc.  
Verizon Foundation

**Bristol Patron  
(\$500 +)**

4imprint, Inc.  
Colleen M. Avedikian\*  
Bank of America  
Charitable Gift Fund  
Maria J. Ferreira-  
Bedard  
Joyce\* and Peter  
Brennan  
Bristol County Savings  
Bank  
Bristol County  
Sheriff's Office  
Bristol Sustainable  
Agriculture Program  
Boissoneault Family\*  
Paul C. Burke '75  
Michael J. Carvalho  
Civitects PC  
Renee Clark  
Colonial Wholesale  
Beverages Corp.  
Dennis M. Cosmo\*  
Dias, Lapalme &  
Martin, LLP  
Fall River Municipal  
Credit Union  
Keith Ferreira  
Cynthia G. Flanagan '99  
Brian Hollansyde  
Steve\* and Melissa  
Kenyon  
Law Office of Luke P.  
Travis, Esq.  
Law Offices of Jane E.  
Sullivan, P.C.  
Mike Tilchin and Linda  
Greer Giving Fund  
Michael B. O'Donnell  
Christopher and  
Kristine O'Neil  
Frank and Eileen  
Orlando  
Jo-Ann M. Pelletier '89\*  
John A. Previte\*

Princess House, Inc.  
Jennifer A. Puniello\*  
Stephen R. Ragno\*  
Donald J. Smyth and  
Joan Pilkington-  
Smyth  
Somerset Federal  
Credit Union  
Angela Stankiewicz  
Atty. Jane E. Sullivan,  
Esq.  
Swansea American  
Legion - Post 303  
Melanie S. Tavares '97  
TFed - Taunton  
Federal Credit  
Union  
The American Legion  
Department of  
Massachusetts  
The Feinstein  
Foundation, Inc.  
Keith T. Toni\*  
Travers Giving Fund  
United Way of  
Massachusetts Bay  
& Merrimack Valley  
Judi G. Urquhart\*  
Steven and Nicole  
Verronneau  
Richard C. Walker '72  
Webster Bank, N.A.  
Richard and Susan  
Wolfson  
Robyn Worthington '01\*  
**Bristol Supporter  
(\$100 +)**  
Anonymous (2)  
Anonymous\*  
Liz and Ken  
Ackerman  
Odete Amarelo, Ph.D.\*  
American Online  
Giving Foundation,  
Inc.

American Repertory  
Theater  
Shelly V. Armstrong '87\*  
Seth Asser  
Maryellen W. Atkins\*  
Richard H. Aubut '72  
Carlos Avila\*  
Beth Bacchicchi  
Dawn M. Banville\*  
Fadi A. Bark  
Holly Hill-Batista  
Natalie Beach\*  
Rebecca Benya-  
Soderbom\*  
Bill Berardi\*  
Jo Bernardo  
Steven Beserosky  
Jennifer Blome  
Stephen Bolton '93  
Bernice Bowdoin\*  
Zelma A. Braga  
David Branco  
Nelson Branco  
JoAnne Breault '84 '12\*  
Anne Brennan  
Holly Bronhard  
Emily\* and Aaron  
Brown  
Judith and Gary  
Brown  
Brian Buchanan  
Dr. Paul Caliendo  
Sheryl M Campbell '24  
Edward and Maureen  
Canner  
Joanne Carroll-  
Connor '76\*  
Mary Cass\*  
Faris and Sidney  
Cassell  
Deborah Charette\*  
Gloria J. Clark '06\*

Cliff '74 and Mary  
Clement  
Collins Construction  
Co., Inc.  
Dr. Gary Convertino\*  
Paul Coogan '74  
Scott Correia  
Victoria Crapo  
Brian Cronin  
Carl J. Cruz '69  
Helen M. Dandurand\*  
Ronnelle A. Davis '05\*  
Isabel Delgado  
Messrs. Robert and  
James DeRosa  
Gina Despres  
Nancy-Lee Devane\*  
Joseph T. DiMaria\*  
E. J. Dionne, Jr. and  
Mary B. Dionne  
Pamela Drainville  
Lucile P. Drane  
William S. Duffy\*  
Valentina Videva  
Dufresne  
Erik C. Durant\*  
El Senor Don  
Gregorio\*  
Emmanuel R.  
Echevarria\*  
Mark Epstein '68  
David F. Feeney\*  
and Cheryl  
Feeney '75  
Allen A. Felisberto '72  
Atty. Julianne Feliz '82  
David Ferguson '74  
Brian Fernandes\*  
Joseph C. Ferreira,  
Esq.  
First Baptist Church  
Andrew J. Fisher\*  
Fisher Bus, Inc.

Kevin Flynn  
Diane M. Forand '08\*  
Andrea Fortier\*  
Paul Fournier  
Bernadette Fowler  
Scott N. Francis '83 '91\*  
Dr. Janet Freedman  
Wendy Friedman  
Tucker Gagnon  
Robin M. Gallant '91\*  
Elizabeth (Taff) Gaulin,  
MSN, NP-C '87  
Pamela Gauvin-  
Fernandes, Esq.  
Jennifer Gergel  
Christine J. Gibney  
Nancy J. Goulart '87  
Stefanie M. Gouveia '10  
Atty. Richard Grahn Esq.  
David S. Graves '08\*  
Dora L. Grossi  
Richard K. Gunther  
Friends of Pat Haddad  
State Rep Pat Haddad  
Sandra A. Haley '79  
Colonel Julie Hall  
Nicole Hall\*  
Martha Hammel  
Virginia A. Handfield  
Mary and David Hanifin  
Paul V. Hanke  
Zoë Harris  
William Heineman  
Thomas\* and Carolyn  
Hoye  
Cheryl Hudon  
Kay Hughes  
Richard Ironfield  
Elizabeth Isherwood-  
Moore  
Jeannine Jenney

# DONOR HONOR ROLL *continued*

Tayla L. Johnson '17	Jacqueline Mbugua*	Marsha and John Onufrak	Elizabeth '14 '15 and Kempton Razee	Samaritans Southcoast
Silvia Jones '24	Lizabeth A. McDonald*	Melissa G. O'Rourke '87	Tahais I. Real-Martins '98 '00*	Mary K. Spavento*
Judith L. and Robert L. Sterns Fund	Michelle McDonald	Max Page	Red Oak Hospitality	St. Anastasia Philoptochos
Jeffrey T. Karam	Bill and Colette McKeon	Holly Pappas*	Anne Marie Reed '88 '04*	Stumpy's Hatchet House
Christine Kelleher	Ryan McTigue	Kristen Pavao '16	Vinnie Rege*	Robert and Lillian Taylor
Ellen L. Kennedy	Brian Medeiros	Peabody Essex Museum	Dr. Robert Rezendes* and Michele Atherton '90 '11	The House of "O"
Bill and Susan Kiley	Maria D. Medeiros	Christine and John Peragallo	Andrea Richardson	The Jacqueline Smyth Moglia Revocable Trust
Andrei Klein	Michelle and Robert Meunier	Gilbert Perry	Olivia Robinson '15*	The Newport Playhouse
Greg Kohler	Carol A. Michael '70	Karen L. Peterson and Kurt Peterson	Joyce B. Rodrigues	The Steamship Authority
Paul Kostek '77	Marisa* and Kent* Millard	Sara L. Pike*	Michael and Patricia Rodrigues	Matthew Thomas
Susan G. Kramer*	Cathleen L. Moniz '77	Jennifer L. Pimental*	Senator Michael J. Rodrigues	Howard Tinberg*
Fire Chief Scott Kruger	Paula J. Montgomery '94	Mary Lou Pires '80 and Stephen Pires	Shirley and Terry Rodrigues	James Tremblay
Denise M. Lamoureux*	Moore & Isherwood Communications, Inc.	Regina C. Pirtle* and Kenneth W. Eaton '73	Dr. Bruce A. Rose '70 and Cynthia A. Rose '70	David and Mary* True
Rosario A. Basay* and Alejandro Latinez*	John J. Morris '23	Plante Jewelers	Gladys Rosofsky	Bob Unger
Darcy Lee	Michele Murphy*	Vin and Mary Plourde	Susan M. Ross-Kut '75	United Way of Rhode Island
Donna Willette (Leite) '85	Narrows Center for the Arts	Paula J. Popeo	Dr. Richard Sacknoff	Helena Urban
Paul Lennon	Mark T. Nataly '90*	Mary A. Potter	Anthony R. Sapienza	Harvey Ussach*
Leonard Martin & Associates, Inc.	Dan Nephew	Nicole Potter	Nancy A. Saravo	Mark and Patricia Verronneau
Eileen and Wayne Levasseur	New Bedford Festival Theatre	William Powers '03*	Linda Sawyer	Atty. Rodney Vieira '89 and Patricia Kennedy-Vieira
Antonio Lima J.D.	Newport Restaurant Group	Chris Prescott	Paul A. Schmid III	Carlton M. Viveiros
Ron Lister*	Maryanne Noris, MD and Mark Hilty, MD	Elaine A. Previte*	Anna Shapiro	Samia Walker
Kaitlyn E. Litwinetz*	Catherine Norton	Providence Performing Arts Center	Eileen W. Sheehan	Lynn and Jim Wallace
Margaret Lyford*	Notre Dame Community Federal Credit Union	Andrew Quinn	Jeanie and Jonathan Siefert	Patricia H. Weisberger '91* and Ron Weisberger*
April Lynch*	Elzbieta Nowakowski*	James A. Quinn	Ron and Lenell Silva	Betty M. Welch
Nate Mackinnon	Adam T. Nunes '18	Robert B. Quirk '81	Diane L. Silvia, RN '86	Westport Federal Credit Union
Shelley Manolakis*	Pete O'Brien	Robert* and Rosemary Rak	Alison and Thomas Siragusa	Elizabeth D. Whitehead*
Amy Marden '95*	Kate O'Hara*	Joyce A. Ramsden	Marla Solomon	
Steven Martins	Vivien Ojadi*	Barbara Raposa '92	John Sousa	
Massasoit Community College	Michael O'Leary		Ryan Sousa	
Mary Mayhew*	George Oliveira			
Silvija and Steven Mazza				

Marion L. Wilner\*  
 Michael L.  
 Winderlick '95  
 Kelemu L.  
 Woldegiorgis\*  
 Zachary Wolfson\*  
 Nancy Lee Wood,  
 Ph.D.\*  
 Glen '00 and  
 Kathleen\* Wordell  
 Judd Zeitz  
 Sandra Zekan  
 Marina Zelfond '96

**Bristol Friend  
 (\$1 +)**

3PHR Consulting &  
 Coaching  
 ABLE Associates Inc.  
 Warren L. Abreu '75  
 Aleksandra  
 Albuquerque  
 Elizabeth R. Alcock\*  
 Carlos Almeida\*  
 Carl Alves  
 Andrew Amatruda  
 Elsie G. Anctil '92  
 Ann T. Petrella Trust  
 Chad Argotsinger\*  
 Janelle C. Arruda '81\*  
 Michael Aupperle  
 Khalil Ayoud  
 Brenda Baker  
 B and M Printing  
 Trophies and Signs  
 Tricia L. Barbosa\*  
 Jane M. Barnes '76  
 Julie and Michael  
 Beach  
 Janice Beck  
 Pamela Begin  
 Shirley Bennett  
 Kenneth Benoit

Jo Ann Bentley '80\*  
 Teresa E. Berard  
 Dr. Gail L. Berman-  
 Martin  
 Linda A. Binns  
 Dr. Stephen J. Black\*  
 David Bliss  
 Angela R. Boffi\*  
 Zacary Borges  
 Boston Red Sox  
 John P. Botelho '89  
 Antoun Boutros  
 Paula A. Bradley '90  
 Delia Brennan  
 Anne Broholm  
 Atty. Rene Brown '96  
 Buttonwood Park  
 Zoological Society  
 Lucille and Louis  
 Cabral  
 Sheila Calnan  
 Sandra\* and William  
 Campos  
 Laura Carlson '03\*  
 Renita Fernandes  
 Casey '92  
 Christina Catelli  
 Bert Caton '72  
 Donna D. Chace '00  
 Susan Chapman  
 Paul Chasse  
 Kathleen Chatterton\*  
 Rick Chretien  
 Daniel Conklin  
 Alexander Cook  
 Cordeiro Family  
 Trust  
 Vasco Cordeiro, Jr.\*  
 Cathleen Costa  
 John A. Costa  
 Madeleine Costa\*  
 Katherine Costantino

Audra and  
 Christopher  
 Costello  
 Elaine Costello  
 Diane M. Cote '87  
 Jeffrey D. Craig '95\*  
 James T. Crofton '78  
 Eileen Cruz\*  
 David Cunha '84  
 Maria J. Sousa  
 D'Alu '69 '86  
 Jenna L. DeBortoli\*  
 Susan DeCosta  
 Nikki DeLano '07  
 Nancy Delehanty  
 Aaron Delsignor  
 Elaine A.  
 DeMoranville '84  
 Laura DeSimone  
 Marianne Beaulieu  
 DeSouza '75  
 Catherine DeTerra  
 Ms. Deborah A.  
 Dion '92  
 Nadine Dowling\*  
 Michelle Drayton  
 Johanna Duponte-  
 Williams\*  
 Elizabeth Dye  
 Kathryn Earle  
 Linda Eastwood  
 Anne-Marie Enderby  
 Kevin Farrar  
 Talos Farris  
 Donna Fernandes '14  
 Kristin Ferreira  
 Paul Ferreira '69  
 Jannelle Ferro  
 Carol A. Ferry '85  
 Michael J. Fischer '93  
 Carol Flack  
 Lynn Flynn

Mary K. Flynn\*  
 Tim Foley  
 Kathleen Foley-  
 Peres\*  
 April L. Fonseca\*  
 Bill and Pat Font  
 Foolproof Brewery  
 Kyle Fortier  
 Michele Fortin  
 Stephen L. Foster,  
 Jr. '78  
 Deborah Fournier  
 Sandra Freedman  
 Steven Gagne, Esq.  
 Howard '96 and Sheila  
 Galitsky  
 Robert Gaouette '94  
 Renata Garcia '15\*  
 Linda Garibaldi  
 Linda Gautie '01\*  
 Ruth Glicksman  
 Gloria and Company  
 Patricia Golden  
 Suzanne Goulart  
 Robert L. Gregory '83  
 Michele Greth  
 Groupraise.com Inc.  
 Heather Harrison\*  
 William Hart  
 Kayla A. Harvey '19  
 Dorothy M. Hays\*  
 Nancy Maguire Heath  
 Hans Heinsen  
 Kathy and Gerry  
 Hickman  
 Laura Hogan\*  
 Sereyvathana  
 Hong '19  
 Andrew Hooley  
 Anne Howard  
 InPOPnito  
 Donna Jacintho

Paul D. Jefferson\*  
 Christina Johnk\*  
 Angela Johnston\*  
 Jennifer Josselyn  
 Maggie C. Judge\*  
 Brian and Nancy Kanell  
 Martin Kaplan  
 Shannon Keith  
 Anne Kelleher  
 Rebecca J. Keller  
 Orion Kline  
 Brian Knapp  
 Sarah G. Kocur '08 '09\*  
 Muriel T. Kokoszka '68  
 Joanne Kubiak  
 Barbara Lamagna\*  
 Meg Lambert  
 T. Lapointe '73  
 Deborah\* and Kevin  
 Lawton  
 Jonathan Leaf '09  
 Katherine Lee  
 Kristen Lee  
 Kenny Levesque  
 Mark Levin and  
 Bernice Kraft-Levin  
 Bruce Levy  
 Timothy T. Lifrak '69\*  
 Joseph Lima  
 Chris Linehan  
 Patrick and Laura Long  
 Cori R. Lopes '07\*  
 James Lopes, Esq.  
 Kevin Luiz  
 Sandra Lygren\*  
 Natalie MacDonald  
 Robert D. Machado '79  
 Eleanor and Lou Maier  
 Diane Mangiaratti  
 Jody Mangiaratti  
 Alaina R. Marcotte\*

# DONOR HONOR ROLL *continued*

Dalia Marinilli	David Mulligan*	Wendy Pimentel '05*	Rosemary and John Salamon	Russell Stanley '85
Christopher Markey	Jean E. Myles*	Kenneth Pinter	Salem Wax Museum	Evelyn Staudinger
Helen Marques '09*	Mystic Aquarium	Max Poole	Salem Witch Museum	Joseph M. Stec '23
Tinamarie Marshall '12*	Barbara Nado	Lucinda Poudrier-Aaronson*	Judith and Melvin Sanford	Story Land
Jon Martin	Will Nakshian	Providence Children's Museum	Lori Santos	Ronald and Eileen Struminski
Carolyn M. Mase*	Guilbeault-Napert	J. Chrystal Puniello*	Shannon Savoy '15*	Cameron Sullivan
Sandra A. Mayhew	New Bedford Ocean Cluster	Arunima Rajbhandary	Deborah Sawyer	Michael Sullivan
McGovern's Family Restaurant	New Bedford Whaling Museum	Ana M. Ramos '01*	Olga L. Scanlon	Sheilah Sullivan
Kevin McGuirk	Sherrie L. Niedziocha '10 '11 '12	Paula Raposa '77	Dr. Adrienne N. Foster Scharf*	Denise Tennant
Daniel and Paula McKeever	Mari Nosal '83	John F. Raposo '81 and Susan Raposo '77	Elizabeth Schneider '93	The Black Whale Kitchen and Bar
John McKenzie '73	LouAnn Nygaard	Camille A. Raymond '82	Rachel M. Schwartz	The Block Island Ferry
Ava McLeod	Michael Oboyle	James H. Rebello '85	Amanda Kristine Scott '24	The Butterfly Place
Gina McLeod	Catherine O'Brien	Matthew Rebole '25	Rebekah A. Senay '22*	The Children's Museum of Greater Fall River
Christine McMichael*	Stephen O'Connor	Anne L. Reed	Maria F. Sharples, RDH '87	The Massachusetts Museum of Contemporary Art
Thomas F. Meagher*	Anna O'Keefe	Kathy Rego	Kathryn Minke Shaw '73	Carmel Therien
Angelina Medeiros*	Old Sturbridge Village	Kristine M. Resendes '93*	Lt. Col. Ernest Silva, Jr., USAF (RET) and Mary Jo Murphy	Beverly A. Therrien '84
Louise Medeiros '70	Anne Oldmixon	Thomas Rezendes	Diane R. Silveria*	Frederick Thorne
Margaret A. Medeiros	William St. Onge	Sean Richard	Richard H. Silvia '71	Tifereth Israel Congregation
Cathleen C. Mello '06*	Oriental Trading Company	Caitlin Riley	Jane Simonin '02 '03	Donna Tomposki
Marcus Mello	Deborah Pagan	Karen Robbins	Erin M. Smith*	Lynne Alberski Toth '71
Ryan W. Menard*	Jake Palma	Kimberlyn Roche	James M. Smith '72 '76	Sarah Trobaugh
Paul '69 and Diane '99 Methot	Brett Parker*	Tamara Roddy*	Thomas Snell	Ian Trombly
Attorney Joe* and Carolyn* Michaud	Lisa Parsons*	Paula (Levesque) Rodgers '71	Janel Snipes	Jeannine Fournier Turcotte
W T Miller II	Donna A. Passman*	Stephen Rodkey	Jason Snyder	Jade R. Vieira '08*
Patricia Milton	Gabriel M. Pereira '68*	Andrew J. Rodrigues '17*	Melissa Solmonese	Nazira Vieira
Kathleen Minihane	Laurie Pereira	Melissa A. Rogers*	Edward '05 and Natalie '11* Sousa	Thomas C. Vieira '21*
George J. Moniz*	Michael R. Perkins '81	Alan S. Rolfe*	Jennifer J. Sousa '12*	Joan Villiard
Jennie C. Moniz '05*	Judith Perreault	Sarah Rose	Southwick's Zoo	Nicole Wademan
Von Marie Moniz '08	Maureen Philbin	Michael Roussos	Francis Stankiewicz	
John Monteiro	Jan Pietraszek '86	Sagres Restaurant		
Robert Monteiro '69	Henry & Lisa Pildner	Frances Sajewicz		
Robin Moore	George M. Pimental '71			
Thomas Morgan*				

Ashley Wallace  
Kathleen Walsh  
Linda and Michael  
Walsh  
Gretchen Weis  
Reverend M. P. West  
Vance E. Westgate  
Marvin Wharton '73  
Noreen Winderlick\*  
Karin E. Wood and  
Peter C. Bogle  
Worcester Art  
Museum  
Sarah Yunits  
Shelly Zimbro

---

If your name is listed  
incorrectly or has been  
omitted, please accept  
our sincere apologies and  
notify the Foundation at  
BCCFoundation@BristolCC.edu  
with any changes.

---

\* Current or former Bristol  
employee

---

### IN MEMORY OF

Pamela Anctil  
Wayne Anctil  
Professor Eugene  
Archese  
Thomas Beaulieu  
PV2 Michael E.  
Bouthot  
Sandra Boone  
Delia Brennan  
Jack and Barbara  
Brennan  
Chef John Caressimo  
Clifford and Alyce  
Carlson  
Kathleen B. Castro  
Milton Clement  
Shelly Ann Costa '22  
Officer Raymond  
Curry  
Joseph B. D'Adamo  
Robert E.  
DeMoranville '81  
John H. Drane  
Paul P. Dunn M.D.  
Leo Elias  
Danielle L. Feinberg '13  
Stephan C. Flanagan  
Nancy Carvalho Frazee  
Andre J. Godwin  
Nicholas T. Grossi  
Dr. Rachel V. Holland  
Hubert Hollynsyde  
Susan Hoy  
Jack P. Hudnall  
Angela G. Jean '72  
Gerald P. Lewis  
Dr. Amine B. Maalouf  
Dr. Gerald G. Magnan  
John J. Marques

Jessica Rosa  
Mayhew '09  
Janice McCarthy '87  
Betty Metz  
Elizabeth Milham  
Officer David M.  
Moco  
Ann Beth (Rose)  
Moore, RN  
Loree Moglia Mullen,  
RHD '88  
Linda D. Mulready  
Lynne M. (Massoud)  
Nasiff  
Ara G. Gelenian, Sr.  
Mary Ann Pettine  
Salvatore Piazza  
Raymond Puchot  
Arthur Randall  
John and Phoebe  
Rodrigues  
Clement O. Rose Jr.  
Lucy Rose  
Murray Rosofsky  
Jules Ryckebusch  
Margaret  
Ryckebusch  
Rhoda Sheehan  
Robert Sherman  
Sally Sweeney  
Michael W.  
Verronneau  
Eloine Vieira  
Diane West  
Dr. Frances Wurtz

---

### IN HONOR OF

Andersen Windows  
and Doors  
Volunteer Team  
Nha Balila (Isidora  
Semedo Correia)  
Zelma Braga  
Ella Carlson  
Lillian Carlson  
Scott Carlson  
Professor Robert  
Caron  
Joanne Carroll-  
Connor '76  
Professor James  
Corven  
José Francisco Costa  
Professor George  
Crook  
Honorato DaCosta  
Officer Nancy Davis  
Dr. Laura L. Douglas  
Nicole Dowling  
Madeleine Ferraz  
Professor Larry  
Frolich  
Kathy Torpey  
Garganta  
Professor Kevin J.  
Garganta  
Alty Hickey  
Dennis Howarth  
Professor Paulette  
M. Howarth  
Deborah Jones  
Barbara Lamagna  
Kelly Landry  
Susan Leduc  
Dennis Leonard  
Professor Ronald  
Lister

Dr. Gregory K.  
Maravelas  
Justin McCann  
Professor Diana  
(Donnie) McGee '82  
Roger Motta  
Professor Joseph  
Murphy  
Tania Nicolet  
Patricia Ollila  
Thomas Pettine  
Leo Racine  
Vijay Roja  
Helaine M. Schupack  
Maureen Sowa  
Professor Alan  
Ventetuolo  
Dr. Ron Weisberger  
Richard B. Wolfson  
Professor Diane  
Yohe

# Financial Report

## Bristol Community College Foundation, Inc.

### Statement of Financial Position

As of June 30, 2025

#### ASSETS:

Current Assets .....	\$977,012
Property and Equipment, net .....	\$18,193,492
Contributions Receivable, net of current portion .....	\$386,272
Investments .....	\$18,833,513
Right of Use Assets .....	\$4,148,955
Other Assets .....	\$18,000

---

**Total Assets..... \$42,557,244**

#### LIABILITIES AND NET ASSETS:

Current Liabilities .....	\$95,191
Due to NOWI .....	\$13,682,140
Lease Liability .....	\$4,309,302
Mortgage Notes Payable, net of current portion .....	\$1,697,304

---

**Total Liabilities..... \$19,783,937**

#### NET ASSETS:

Unrestricted.....	\$3,688,296
Temporarily Restricted .....	\$19,085,011

---

**Total Net Assets ..... \$22,773,307**

---

**Total Liabilities  
and Net Assets ..... \$42,557,244**

### Statement of Revenue & Expenses

As of June 30, 2025

#### REVENUE AND SUPPORT:

Contributions .....	\$1,052,029
Special Events.....	\$69,721
Investment Return .....	\$1,621,827
Rent & Other Income .....	\$1,667,228

---

**Total Revenue and Support ..... \$4,410,805**

#### EXPENSES:

Scholarships, Awards and Student Support .....	\$3,432,726
General and Administration .....	\$87,085
Fundraising .....	\$248,085

---

**Total Expenses ..... \$3,767,896**

---

**Changes in Net Assets ..... \$642,909**

# Leadership

## President

**Sedgwick L. Harris, Ed.D.**

## Bristol Community College Board of Trustees

**Joan M. Medeiros**  
Chair

**Maria Gonzalez**

**Todd E. McGhee**  
Vice Chair

**Jeffrey T. Karam**

**Lynn A. Motta '92**  
Secretary

**Antonio Lima**

**Renee Clark**

**Steven Martins**

**John Morris '23**  
Alumni Trustee

**Pamela Gauvin, Esq.**

## President's Leadership Team

**Joyce Faria Brennan**  
Vice President, Marketing  
& Communications

**Brianne McDonough**  
Interim Vice President,  
Economic and Business  
Development

**Emmanuel R. Echevarria**  
Chief Human Resources  
Officer

**Kate O'Hara**  
Vice President, Student  
Services and Enrollment  
Management

**Andrew Fisher**  
Vice President,  
Academic Affairs/  
Chief Academic Officer

**Jo-Ann Pelletier '89**  
Chief Information  
& Data Officer,  
Information Technology  
Services

**Steve Kenyon**  
Vice President,  
Administration & Finance/  
Chief Financial Officer

**Judi G. Urquhart**  
Chief Advancement Officer

**April Lynch**  
Chief Strategy Officer

## Bristol Community College Foundation Board of Directors

**Frank B. Sousa III**  
President

**Nicholas M. Christ**  
Vice President of  
Board Development

**Kathy MacLean**  
Vice President of  
Fundraising

**William Kiley**  
Treasurer

**John McMahon**  
Clerk

## Board Members

**Brian Hodess**

**Liz Isherwood**

**Christina Johnk**

**Thomas Kelly**

**Michelle McDonald**

**Thomas P. Murray**

**Gregory F. O'Donnell**

**Benita Rose-Monteiro**

**Diane L. Silvia '86**

**Luke P. Travis, Esq.**

**Richard B. Wolfson**

## Board of Directors, Ex Officio Members

**Sedgwick L. Harris, Ed.D.**  
Bristol Community College  
President

**Joan M. Medeiros**  
Board of Trustees Chair

**Cynthia G. Flanagan '99**  
Alumni Association Chair

## Alumni Steering Committee

**Cynthia G. Flanagan '99**  
Chair

**Philip Oliveira '83**  
First Vice Chair

**Donna Oliveira '86**  
Secretary

**Justin Alexander '11**

**Dennis Bibeau '69**

**JoAnne Breault '84 '12**

**Julianne Feliz Kidd '82**

**Silvia Jones '24**

**Joseph Lopes '99**

**Carol Michael '70**

**Kieran Murray '21**

**Stephen Rivard '74**

**Diane L. Silvia '86**

**Edward Sousa '05**

**Natalie Sousa '11**

**Joseph Stec '23**

## Ex-Officio

**John Morris '23**  
Alumni Trustee

# BRISTOL

---

COMMUNITY COLLEGE

Bristol Community College  
777 Elsbree Street  
Fall River, MA 02720

NONPROFIT  
U.S. POSTAGE  
**PAID**  
PERMIT NO. 84  
BROCKTON, MA

