

Since its chartering in 1965, Bristol Community College has been advancing a vibrant, diverse community through education, learner by learner. Bristol is where people from diverse backgrounds turn to earn a degree, access work-related training and expand their cultural and intellectual horizons.

Bristol offers a rich variety of career and transfer programs that lead to an associate degree in science, arts and applied sciences, as well as certificates of accomplishment or achievement. Students are able to transfer to many baccalaureate institutions throughout the state and country from any of our convenient locations in Attleboro, Fall River, New Bedford, Taunton and online.

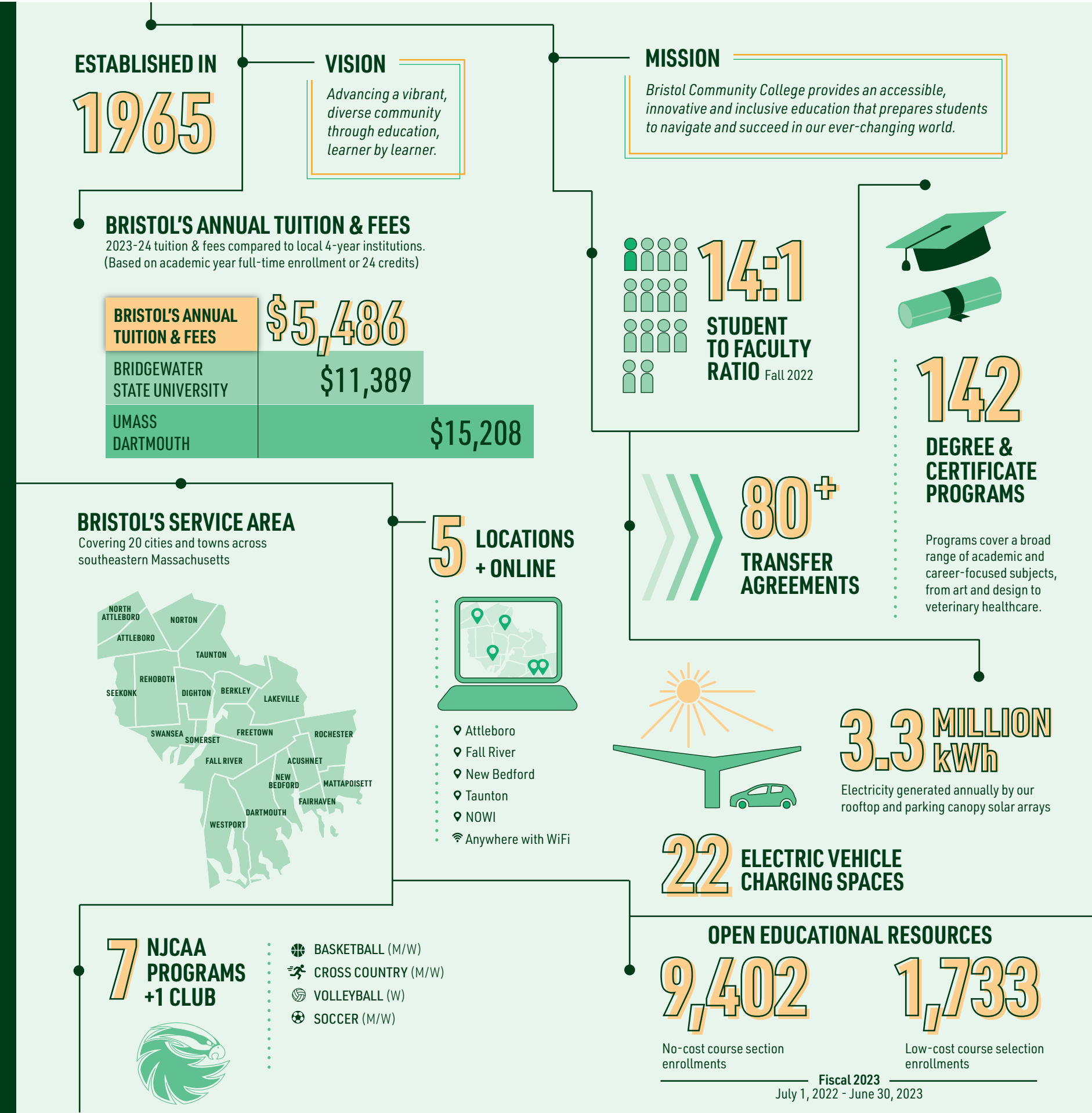
As the leading resource for education and workforce development in southeastern Massachusetts, Bristol provides programs that promote individual opportunity and the region's economic health. Bristol's Business Solutions & Partnerships provides customized training for businesses and the community. The college also strives to put the needs of learners first with support services and career advancement opportunities that lead to student success by reducing barriers to educational access.

Bristol also develops active partnerships with business and industry, preK-12, colleges and universities and social service agencies to maintain relevance and effectiveness of all credit and noncredit programming. Bristol provides an accessible, innovative and inclusive education that prepares students to navigate and succeed in our ever-changing world.



Bristol Community College is accredited by the Commission on Institutions of Higher Education of the New England Commission on Higher Education, Inc.

Bristol Community College is an Affirmative Action/Equal Employment Opportunity Employer and does not discriminate on the basis of race, sex, gender identity, color, national origin, sexual orientation, genetic information, religion, age, veteran status or disability under state or federal law in any aspect of employment, admissions, access or treatment of its programs and activities.



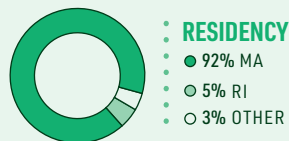
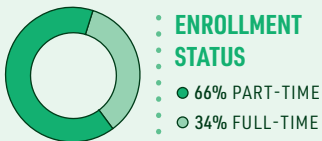
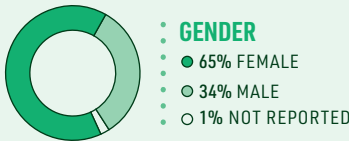
FACT SHEET
2023
BRISTOL
COMMUNITY COLLEGE

ENROLLMENT

FALL 2023 SNAPSHOT

6,096 Students enrolled in Fall 2023 at Bristol, which translated to a full-time equivalent (FTE)* headcount of 3,601.9.

AVERAGE AGE 25.9



8,143 Total unduplicated headcount in FY23

* Enrollment is often measured by full-time equivalent (FTE) students, which is a calculation showing how many students would be attending if all were enrolled in 15 credits per term. The FTE calculation is based on the sum of credits carried by all students divided by 15.

#4 Ranking by enrollment among the 15 Massachusetts community colleges for Fall 2022; Bristol consistently ranks as one of the largest in the commonwealth's system.

30 Number of area high schools represented by Bristol's dual-enrolled students for Fall 2023.

SUCCESS INDICATORS

69% 2023 graduates are continuing their education

95% 2023 graduates are likely to recommend Bristol to others

909 Degrees and certificates awarded in FY23

69% 2023 graduates are employed full- or part-time or are self-employed

39.3% Fall 2021 to Fall 2022 retention rate for first-time, part-time students at the same institution. This does not exceed the MA Community College average of 41.7%

58.7% Fall 2021 to Fall 2022 retention rate for first-time, full-time students at the same institution. This exceeds the MA Community College average of 55.8%

699 Total students who transferred in 2022

55 Average credits transferred to other institutions

TOP TRANSFER INSTITUTIONS:

4-YEAR PUBLIC

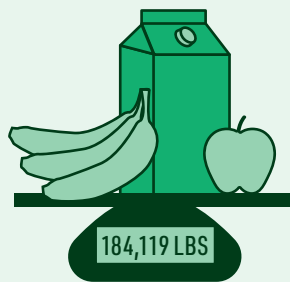
- 1 UMASS Dartmouth
- 2 Bridgewater State University
- 3 UMASS Amherst
- 4 Rhode Island College
- 5 UMASS Boston & UMASS Lowell (tied for #5)

4-YEAR PRIVATE

- 1 Southern New Hampshire University
- 2 Laboure College
- 3 New England Institute of Technology
- 4 Massachusetts College of Pharmacy and Health Sciences
- 5 Brockton Hospital School of Nursing

STATEMENT ON EQUITY

Bristol Community College strives to promote equity by removing social and structural barriers through social justice advocacy, support services, and inclusive, affirming, and accessible education and employment. We respect all cultural backgrounds, social identities, and learning abilities and promote the positive self-efficacy of each college community member. Bristol provides opportunities for dialogue, engagement and growth by creating a welcoming and respectful environment to work and learn. Additionally, we provide a framework for promoting access and equity for all by challenging and empowering each member of our community to become an agent of transformative change by denouncing racism, hate, violence and all forms of discrimination.



16,788 participants – including many students – received more than 184,119 lbs. of free groceries from Bristol's Mobile Food Market in FY23

STUDENT LEADERSHIP

4 Elected members in leadership of Student Senate

1 Elected Student Trustee
4 Hired Student Ambassadors

ECONOMIC CONTRIBUTIONS

3,318 learners participated in Economic & Business Development courses in FY23

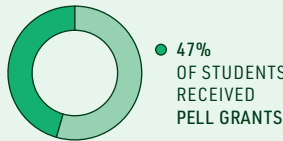
Under Economic & Business Development, students engaged with Adult Education programs (e.g. HiSET, GED and ESOL), transition-to-college bridge programs and Business Solutions & Partnerships, which offers customized training and professional development courses.

\$17.2M in total funding to 43 grants through the Office of Grant Development in FY23

These grants were awarded from private, state and federal sources and were submitted by departments across the college, including Academic Affairs, Student Services & Enrollment Management and Economic & Business Development. It does not include the federal CARES Act fund.

FISCAL YEAR 2022 | DEGREE-SEEKING STUDENTS

\$22.9M Federal, state and local financial aid disbursed



64% of new incoming students graduate without debt*

* Federal, state and private loans that were borrowed by the student while enrolled at Bristol

\$309K Total scholarship funds from the Bristol Foundation

251 Scholarships awarded from the Bristol Foundation

CREDIT FOR PRIOR LEARNING

BY EXAM:

507 credits given by exam

BY CREDENTIAL:

107 credits given by credential

DATA ANALYTICS

Bristol's Student Success and Achievement dashboards ensure that Bristol's data is accessible to the college community, balanced with security and governance. Strategic Analytics provides various forms of data to ensure that everyone at the college is empowered to make decisions that align with Bristol's goals and objectives.

To learn more, visit: [BristolCC.edu/StudentSuccessAndAchievement](https://bristolcc.edu/StudentSuccessAndAchievement)